

GENTEX CORPORATION

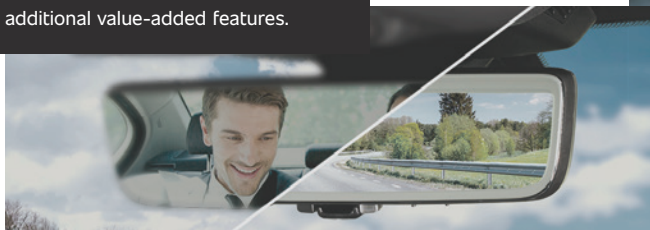
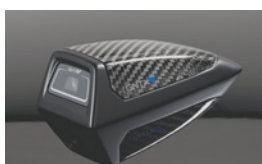
Gentex is a leading supplier of electro-optical products for the global automotive industry. We supply nearly every major automaker with advanced electronic features that optimize driver vision and enhance driving safety. We have focused competency in digital vision, automotive connectivity, and dimmable glass systems.

As vehicle electrification and autonomous driving trends progress, our core technologies are converging to yield products that provide unprecedented advances in digital vision and stand to become integral components in connected cars and future mobility systems.

PRODUCT LINES

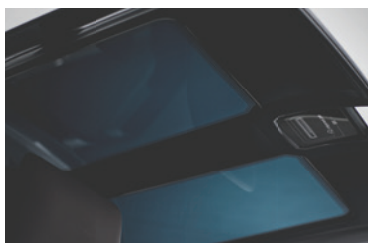
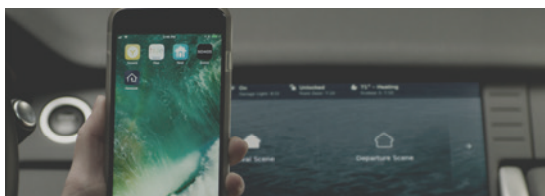
DIGITAL VISION

Managing the industry's evolution from analog to digital rear vision with custom cameras, displays, and additional value-added features.



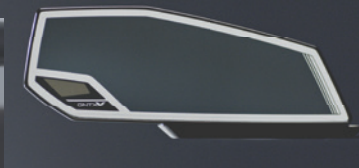
CONNECTED CAR

Comprehensive, robust V2I features including vehicle-to-home automation and vehicle-to-infrastructure transaction modules.



DIMMABLE GLASS

Smart glass for automotive, aerospace and beyond.



FAST FACTS

Established

1974

Ownership

NASDAQ Global Select Market

Operations

Zeeland, Michigan

Employees

5,800

Sales (2018)

\$1.83 billion

Units Shipped

42 million dimmable devices

CORE COMPETENCIES

Our proficiency in a wide range of core competencies yields a unique fusion of technologies.

- Electronics
- Microelectronics
- Design and Engineering
- Chemical Development and Coatings
- Automated Assembly
- Displays
- Glass Bending and Processing
- Vision Systems and Cameras

TODAY'S FEATURES

TOMORROW'S TECHNOLOGY

GENTEX.COM | GENTEXTECH.COM



THE GENTEX INTEGRATED TOLL MODULE® (ITM®)

ITM is a nationwide toll collection technology for factory integration into new vehicles. The system uses a mirror-integrated, multi-protocol toll transponder that provides motorists with access to tolls road throughout the U.S. – all under one account. The system was developed by Gentex with TransCore providing hardware/software expertise and Bestpass providing all aspects of ITM customer service.

CONSUMER BENEFITS:

- Convenient
- Simple to use
- No need to manage multiple accounts or tags
- Eliminates potential of affixing tag in a location that cannot be read
- Improves vehicle appearance and forward visibility
- Cannot be misplaced, lost, or stolen
- Runs on vehicle power — no need to ever change a battery
- Ability to drive regionally or nationwide with registration through Bestpass™

TOLLING AGENCY BENEFITS:

- Reduction in tag read related issues — high performance transponder which has passed testing in each applied vehicle
- Elimination of hardware — no need to purchase, distribute, or collect toll tags
- Significant reduction in customer service requirements for ITM customers. Bestpass will provide complete customer service including:
 - device activation
 - vehicle registration
 - customer service
 - credit risk
 - billing
 - payment and collections

FIRST OEM CUSTOMER

Audi

Others to be announced



THE ITM PRODUCT TEAM

GENTEX

ITM system supplier to automakers

TRANSCORE

Gentex's exclusive technology partner for hardware and software

BESTPASS

Gentex's exclusive service provider for ITM

