

**GENTEX**  
CORPORATION

# GENTEX OVERLAND BUILD

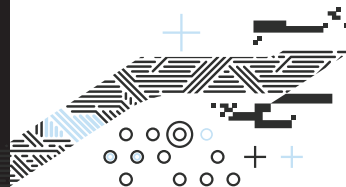
LOOK BOOK



We get this  
question a lot.



# WHY DOES A TECH COMPANY AND SUPPLIER OF HIGH- TECH ELECTRONICS EXECUTE CUSTOM VEHICLE BUILDS?



Because even though we're known for advanced electronic technology, it's our ability to seamlessly integrate features according to customer specs and design language that sets us apart.

Our goal is to create prototypes that look and function like the finished item, which ultimately helps our customers iterate quicker and bring finished tech to market faster.

The builds in this look book demonstrate prototyping capabilities in areas such as advanced composite materials, silicone tooling and precision urethane casting, glass processing and coating, paint and finish-matching, mechanical engineering, electrical integration, and more.

If you need to integrate advanced tech for automotive (or any industry, really) consider Gentex.

We'd love to put our tech features and prototyping skills to work for you.







2021

# Chevrolet Silverado Trail Boss

(2LT)

## REAR VISION SYSTEM

- GM Gen2 FDM®—forged carbon fiber housing
  - Bi-modal functionality
    - Mirror Mode** – operates as standard mirror
    - Display Mode** – integrated LCD display for optimal rear vision; triples rearward field-of-view
- Standard, CHMSL-integrated “OEM” rear-facing camera
- Separate remote/auxiliary camera
  - Hardwired to ensure real-time video signal
  - Waterproof



## CUSTOM HOMELINK® OVERHEAD CONSOLE

- Most widely used and trusted car-to-home automation system

## AUTO-DIMMING EXTERIOR MIRRORS





## PERFORMANCE

- 6.2L ECOTEC3 V8 ENGINE
- KOOKS HEADER KIT WITH CUSTOM SATIN BLACK CERAKOTE
- BORLA ATAK EXHAUST SYSTEM
- AFE BLUE COLD AIR INTAKE SYSTEM
- HP TUNERS MPVI2 PERFORMANCE TUNE

## WHEELS/TIRES

- BRIXTON FORGED WHEELS – CUSTOM FORGED ‘ONE-OFF’ GENTEX DESIGN
  - CUSTOM FORGED MONOBLOCK OFFROAD WHEELS
  - CUSTOM SPEC ‘ONE-OFF’ GENTEX DESIGN
  - DOUBLE SMOKE TINT FINISH
- NITTO RIDGE GRAPPLER TIRES – 37X13.50R20

## BRAKING

- LABEL MOTORSPORTS SPEC CUSTOM BIG BRAKE KIT
  - **FRONT:** LARGE 8-PISTON BILLET CALIPERS WITH 405X36MM ROTORS
  - **REAR:** 6-PISTON BILLET CALIPERS WITH 380X28MM ROTORS
  - REAR PARKING BRAKE SYSTEM WITH PLUG AND PLAY ELECTRONIC E-BRAKE
  - ALL ROTORS DRILLED AND SLOTTED
  - COLOR-MATCHED PAINT FINISH WITH LOGO

## BODY

- FIBERWERX CARBON FIBER FENDERS
- FIBERWERX CARBON FIBER BEDSIDES
- GENTEX DESIGNED FORGED CARBON ACCENTS
  - HOOD APPLIQUE
  - EXTERIOR MIRROR CAP
  - EXHAUST TIP SHROUD

## WRAP

- CUSTOM GENTEX DESIGN
- WRAP INSTALL – LABEL MOTORSPORTS

## FRONT BUMPER

- CUSTOM ADDICTIVE DESERT DESIGN STEALTH FIGHTER FRONT WINCH BUMPER
- BAJA DESIGNS 40" ONX6 ARC, AMBER/WHITE DUAL LED LIGHT BAR
- BAJA DESIGNS SQUADRON SPORT, PAIR DRIVING/COMBO LED
- SMITTYBILT XRC GEN3 12000 WINCH
- FACTOR 55 ULTRAHOOK -- GRAY
- FACTOR 55 ULTRAHOOK ROPE GUARD
- FACTOR 55 HAWSE FAIRLEAD

## REAR BUMPER

- ADDICTIVE DESERT DESIGN STEALTH FIGHTER REAR BUMPER
- BAJA DESIGNS SQUADON SPORT WHITE WIDE LED

## ROOF RACK

- CUSTOM EXPEDITION ONE SAM MULE ROOF RACK SYSTEM
- BAJA DESIGNS 40" ONX6, WHITE, DRIVING/COMBO LED
- DJI MATRICE 300 RTK DRONE
- ZENMUSE H20 20MP HYBRID CAMERA SYSTEM

## BED RACK SYSTEM AND TENT

- LEITNER DESIGNS FORGED ACTIVE CARGO SYSTEM
- GEARPOD, GEARPOD XL, AND GEAR BAG ACCESSORIES
- ROTOPAX FUEL AND WATER CANS
- MAXTRAX MKII BLACK RECOVERY BOARDS
- COLOR-MATCHED KRAZY BEAVER SHOVEL
- COLOR-MATCHED HI-LIFT XTREME JACK
- BAJA DESIGNS S2 SPORT SCENE/WORK LIGHTS
- 23ZERO 72" WALKABOUT SERIES TENT
- 23ZERO 270 DEGREE TRUCK AWNING
- DECKED TRUCK BED STORAGE SOLUTION

## FRONT SUSPENSION

- DIRT KINGS LONG TRAVEL KIT
  - COMPLETE LONG TRAVEL AXLES
  - LONG TRAVEL SPEC COILOVERS, FOX 2.5 DCS REMOTE RESERVOIRS
  - FOX 2.5 TRIPLE BY-PASS SHOCKS
  - BYPASS HOOP KIT

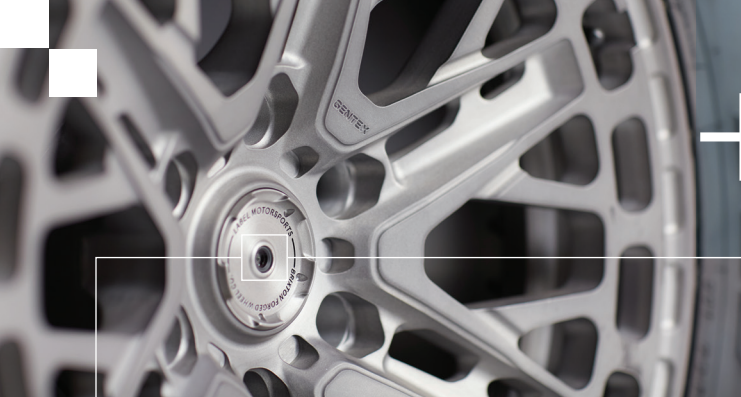
## REAR SUSPENSION

- DEEVER M27 SPRINGS AND HARDWARE
- FOX OFF-ROAD 2.5 REAR SHOCKS WITH ADJUSTERS
- LONG TRAVEL SHACKLES









GENTEX-INTEGRATED TRAILER CAM  
(WHEEL CENTER-CAP)

# 2021 Vorsheer XOC

(EXTREME  
OVERLAND  
CAMPER)





- FAN-TASTIC VENT
- GALLEY STORAGE
- CABIN STORAGE
- ROOF RACK
- GEAR BOX
- TONGUE BOX
- SAFARI LADDER
- HATCH RACK
- SPARE TIRE PACKAGE
- ADAPTABLE SPARE TIRE CARRIER
- FULL SIZE SPARE TIRE

#### ADDITIONAL OPTIONS

- AMENITIES
  - AIR CONDITIONING UNIT (5000 BTU)
  - PROPANE STOVE
  - PROPANE CABIN HEATER (6250 BTU)
  - WATER HEATER PACKAGE
    - 30 GALLON WATER TANK
    - TANKLESS WATER HEATER
    - HIGH VOLUME WATER PUMP
  - SHOWER PACKAGE
    - EXTERNAL SHOWER BOX
    - HANDHELD SHOWER
    - MOLLE MOUNT PANEL
  - AUDIO PACKAGE
  - QUEEN MATTRESS (60" X 80")
  - CABIN ENTRY SIDE STEPS
  - FRIDGE/FREEZER (63 QUART)
- ELECTRICAL
  - VOLTMETER
  - DUAL BATTERY PACKAGE
  - 2000-WATT INVERTER
  - FOLDABLE SOLAR PANELS
- FUNCTIONAL
  - ARTICULATING HITCH
  - ASTC UTILITY HITCH
  - ASTC ACCESSORY ARMS
  - JERRY CAN BOX
  - ASTC PREP TABLE
  - PROPANE RACK (FITS 20, 30 OR 40 LB. TANK)

#### CUSTOM

- BRIXTON FORGED WHEELS – CUSTOM FORGED ‘ONE-OFF’ GENTEX DESIGN
  - CUSTOM FORGED MONOBLOCK OFFROAD WHEELS
  - CUSTOM SPEC ‘ONE-OFF’ GENTEX DESIGN
  - DOUBLE SMOKE TINT FINISH
- NITTO RIDGE GRAPPLER TIRES – 37X13.50R20
- CUSTOM INTEGRATED KEGERATOR WITH REVERSE TAP, BOTTOM-FILL SYSTEM
- CUSTOM INTEGRATED BAR AND HUMIDOR
- 23ZERO 62" BREEZEWAY SERIES TENT AND 180 DEGREE AWNING
  - SHOWER ENCLOSURE AWNING
  - ROOF TOP TENT

#### WRAP

- CUSTOM GENTEX DESIGN
- WRAP INSTALL – LABEL MOTORSPORTS

#### BASE

- 60" XOC TRAILER
  - 33" A/T TIRES WITH 17" WHEELS
  - 12" ELECTRIC DRUM BRAKES (6 X 5.5 HUB)
  - TIMBREN AXLE-LESS INDEPENDENT SUSPENSION
  - LIFTING JACK STANDS
- SINGLE BATTERY PACKAGE
- BASIC LIGHTING PACKAGE







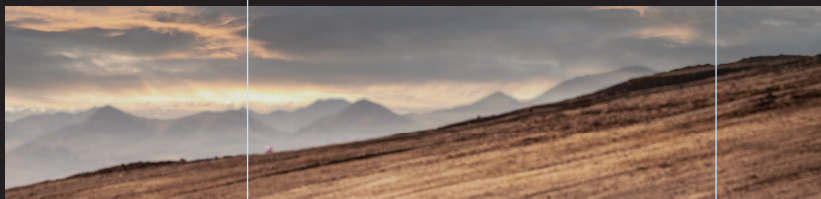
THESE BUILDS AND THIS  
BOOK PRODUCED IN  
COOPERATION WITH:

**Label Motorsports**

@labelmotorsports

**DMD Photographic**

@dmdphotographic



**GENTEX**  
CORPORATION

©Gentex 2022